

Somerset Road

KNOWLE

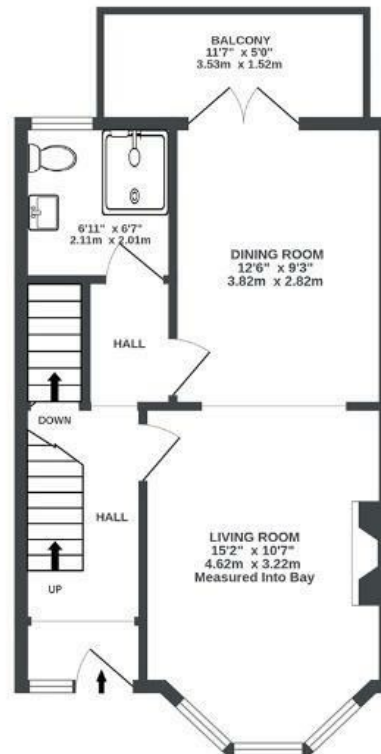
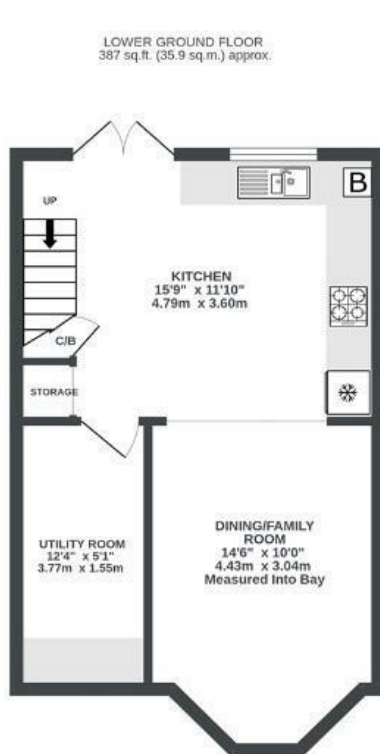
APPROXIMATE FLOOR AREA
137.7 SQM / 1483 SQFT



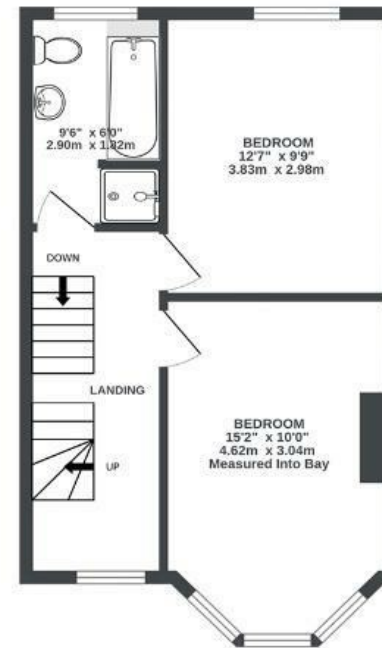
GROUND FLOOR
407 sq.ft. (37.8 sq.m.) approx.



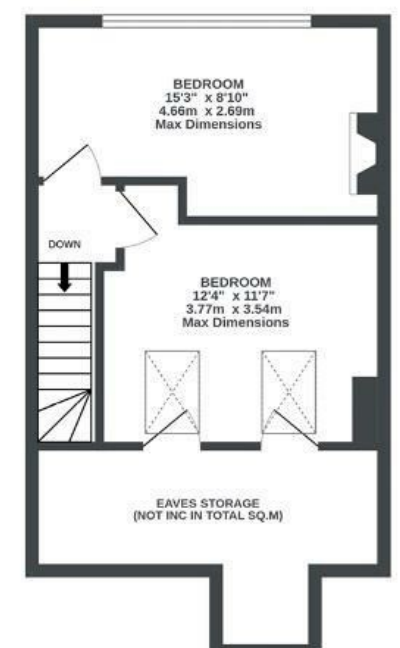
LOWER GROUND FLOOR
387 sq.ft. (35.9 sq.m.) approx.



1ST FLOOR
409 sq.ft. (38.0 sq.m.) approx.



2ND FLOOR
280 sq.ft. (26.0 sq.m.) approx.



Illustrations are for reference purposes only, measurements are approximate, not to scale.

Boardwalk

Somerset Road , BRISTOL

£

£625,000



BS4 2JA

zzz

4 Bedrooms



2 Bathrooms

"This house has revealed more magic to us the longer we've lived here. Stepping onto the balcony feels like entering Narnia. The green expanse of Arnos Vale and the city beyond. Watching thousands of fireworks on New Year's Eve has nearly brought us to tears! We've never lived anywhere where there has been such a strong and friendly community. People look out for each other, kids play together and we've made some great friends."

